



*Refuge for the soul*



## FROM THE CREATORS OF:



Real photo

Sabaneta, Antioquia



Rendering

Sabaneta, Antioquia



Rendering

Rionegro, Antioquia





\*This image is for illustrative purposes only and may be subject to change. It also contains aesthetic elements that reflect the artist's interpretation and are not binding for the development companies.

At **PULSO PROYECTOS TEMÁTICOS**, we are a team of professionals in engineering, design, management, and customer service, specializing in **THE DEVELOPMENT OF THEMED PROJECTS**. We are dedicated to conceptualizing, managing, making viable, designing, promoting, and marketing iconic projects that stand out and endure over time. We create innovative urban spaces for living, shopping, and entertainment, offering our clients and users memorable experiences.





*A new life begins,*  
and your well-being takes center stage

\*This image is for illustrative purposes only and may be subject to change. It also contains aesthetic elements that reflect the artist's interpretation and are not binding for the development companies.





Inspired by the magic of winter,  
we present an exceptionally cozy  
project where residents can feel  
calm, serene, rested, at complete  
peace, and connected with  
themselves and nature.





WITH THE SUPPORT OF:



Londoño  
Gómez

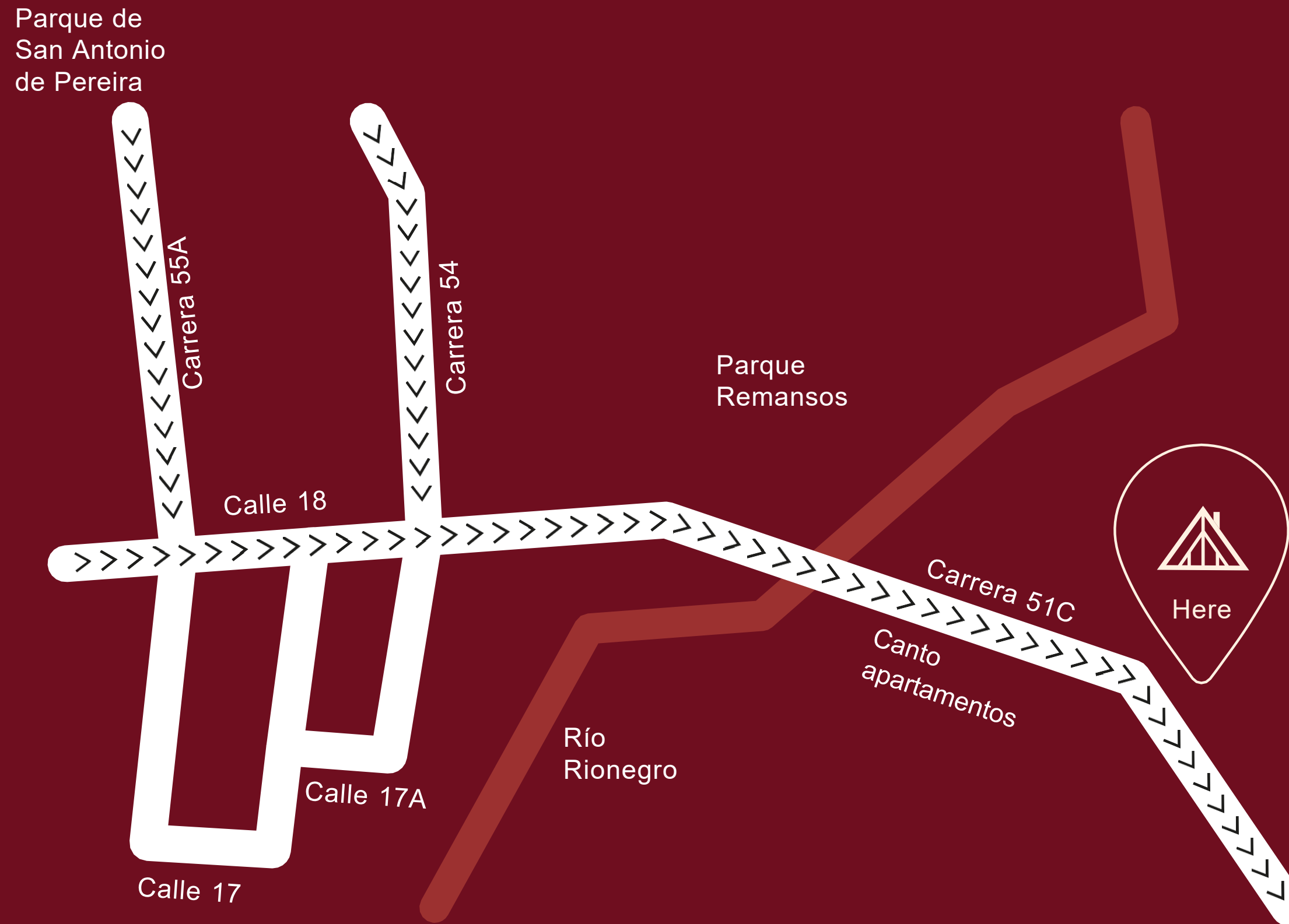


**PULSO**  
PROYECTOS TEMÁTICOS





## LOCATION



Suiza Apartments is located in Rionegro, Antioquia, in the Ojo de Agua sector — a peaceful area surrounded by nature, yet conveniently close to healthcare centers, shopping malls, and the main park of San Antonio de Pereira, renowned for its delicious desserts. It also offers easy access to Rionegro, La Ceja, and Llanogrande.





\*This image is for illustrative purposes only and may be subject to change. It also contains aesthetic elements that reflect the artist's interpretation and are not binding for the development companies.

Suiza Apartments recreates the magic of Switzerland with a beautiful village of chalets built with wood and stone, featuring as its icon the Grand Chalet, from which stunning artificial waterfalls will flow, enhancing the project's lush green landscape even more.

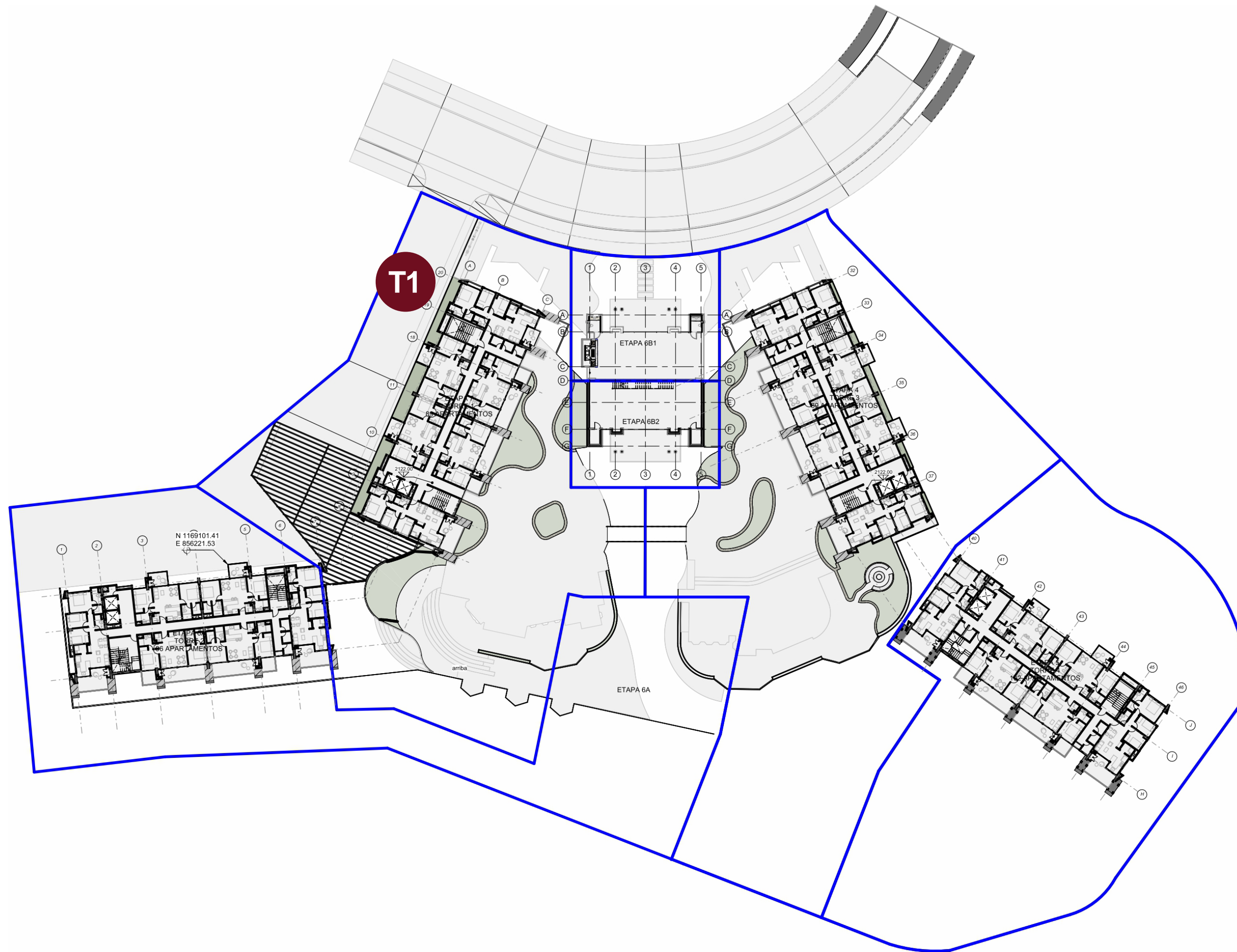




\*This image is for illustrative purposes only and may be subject to change. It also contains aesthetic elements that reflect the artist's interpretation and are not binding for the development companies.

Suiza features a winter resort-style design, blending Swiss and Scandinavian architecture that harmonizes perfectly with the surrounding greenery.









\*This image is for illustrative purposes only and may be subject to change. It also contains aesthetic elements that reflect the artist's interpretation and are not binding for the development companies.

The project is designed with a WELLNESS concept, aimed at nature lovers who seek well-being and a healthy, balanced lifestyle.





\*This image is for illustrative purposes only and may be subject to change. It also contains aesthetic elements that reflect the artist's interpretation and are not binding for the development companies.

The private entertainment areas will be located inside the Grand Chalet and the smaller chalets that make up the Swiss village.





\*This image is for illustrative purposes only and may be subject to change. It also contains aesthetic elements that reflect the artist's interpretation and are not binding for the development companies.

These areas will offer a spectacular view of the Grand Chalet and the surrounding forest.





\*This image is for illustrative purposes only and may be subject to change. It also contains aesthetic elements that reflect the artist's interpretation and are not binding for the development companies.

Outdoors, there will be a thermal area (jacuzzis) with a swimming lane and a solarium.





\*This image is for illustrative purposes only and may be subject to change. It also contains aesthetic elements that reflect the artist's interpretation and are not binding for the development companies.

BBQ zone, and fire pits.





Reference image

## Dwelling

# *APARTMENTS OF 688 to 850 Sq.Ft.*

Private areas ranging from approximately 637 sq. ft. to 788 sq. ft.

The residential area consists of 4 apartment towers, with 6 apartments per floor and 15 floors in height, offering units of 64 m<sup>2</sup> and 79 m<sup>2</sup>, with views of the themed development, Rionegro, or the forest.



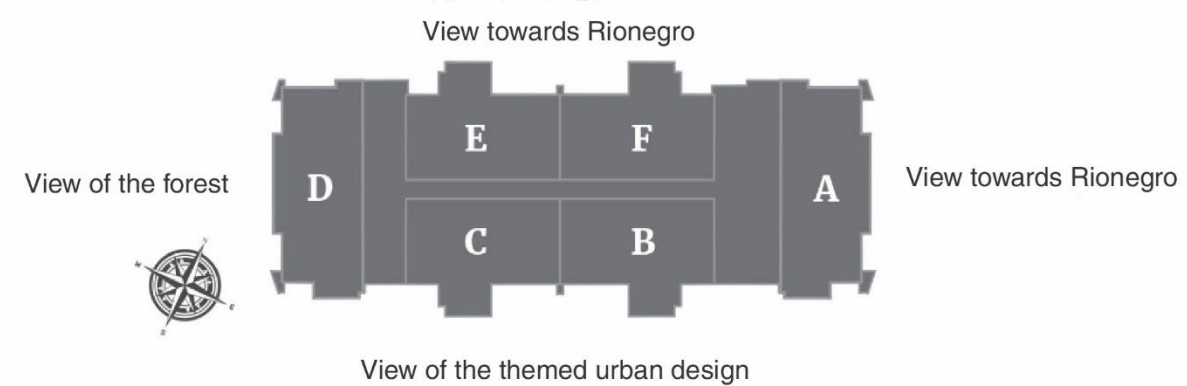
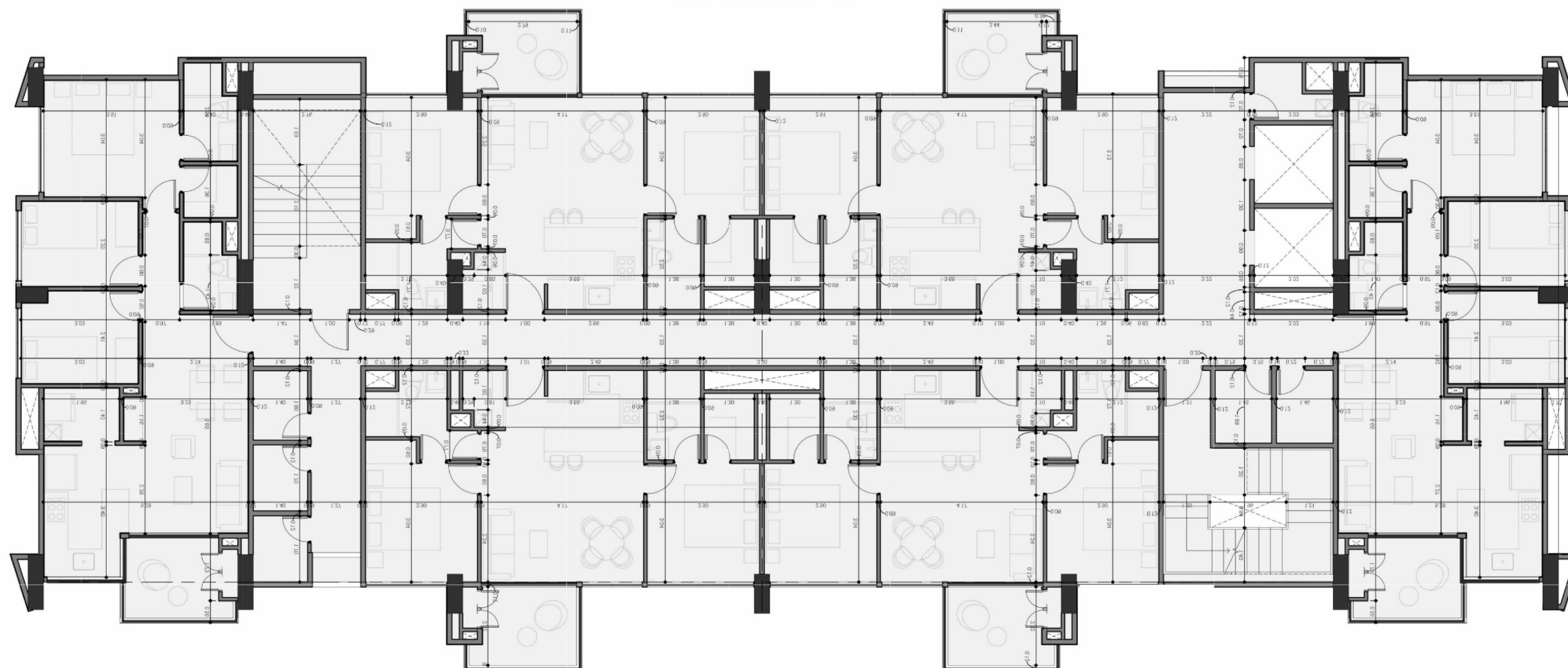


\*This image is for illustrative purposes only and may be subject to change. It also contains aesthetic elements that reflect the artist's interpretation and are not binding for the development companies.

Vehicular access



# TYPICAL FLOOR PLAN Tower 1

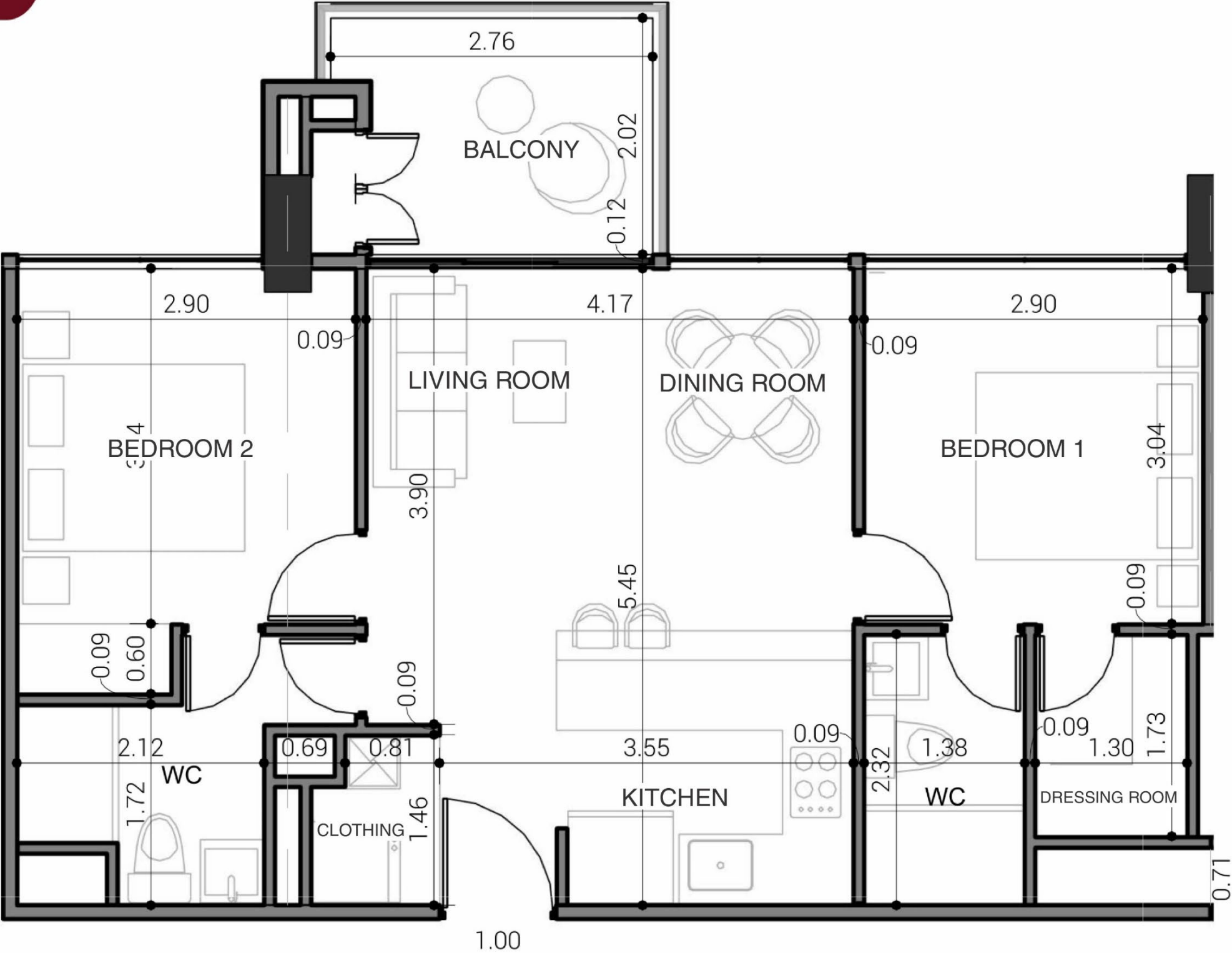


\*This image is for illustrative purposes only and may be subject to change. It also contains aesthetic elements that reflect the artist's interpretation and are not binding for the development companies.

Quoted price is subject to change without prior notice and does not constitute a business offer. The current property prices must be confirmed with the project's sales office. This quotation, along with the documents and contracts required for fiduciary linkage related to the proposed owner(s) of the Suiza Apartments project, must be approved by the management of the development companies.



# 689 sq. ft. Apartments

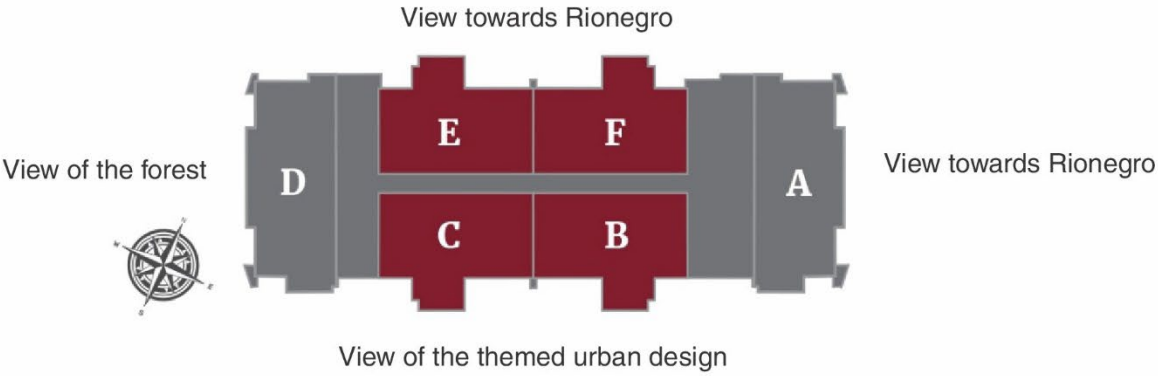


**BUILT AREA:** 64.3 m<sup>2</sup> (approx. 692 sq. ft.)  
**PRIVATE AREA:** 58.8 m<sup>2</sup> (approx. 633 sq. ft.)

**Tower 1**  
2 bedrooms – Butterfly Design  
Includes utility shafts, columns, and perimeter walls\*

The area measurements of each space are taken between the walls that define them and do not include furniture.

The full finishes package will have an additional cost, which will be provided at the sales office.

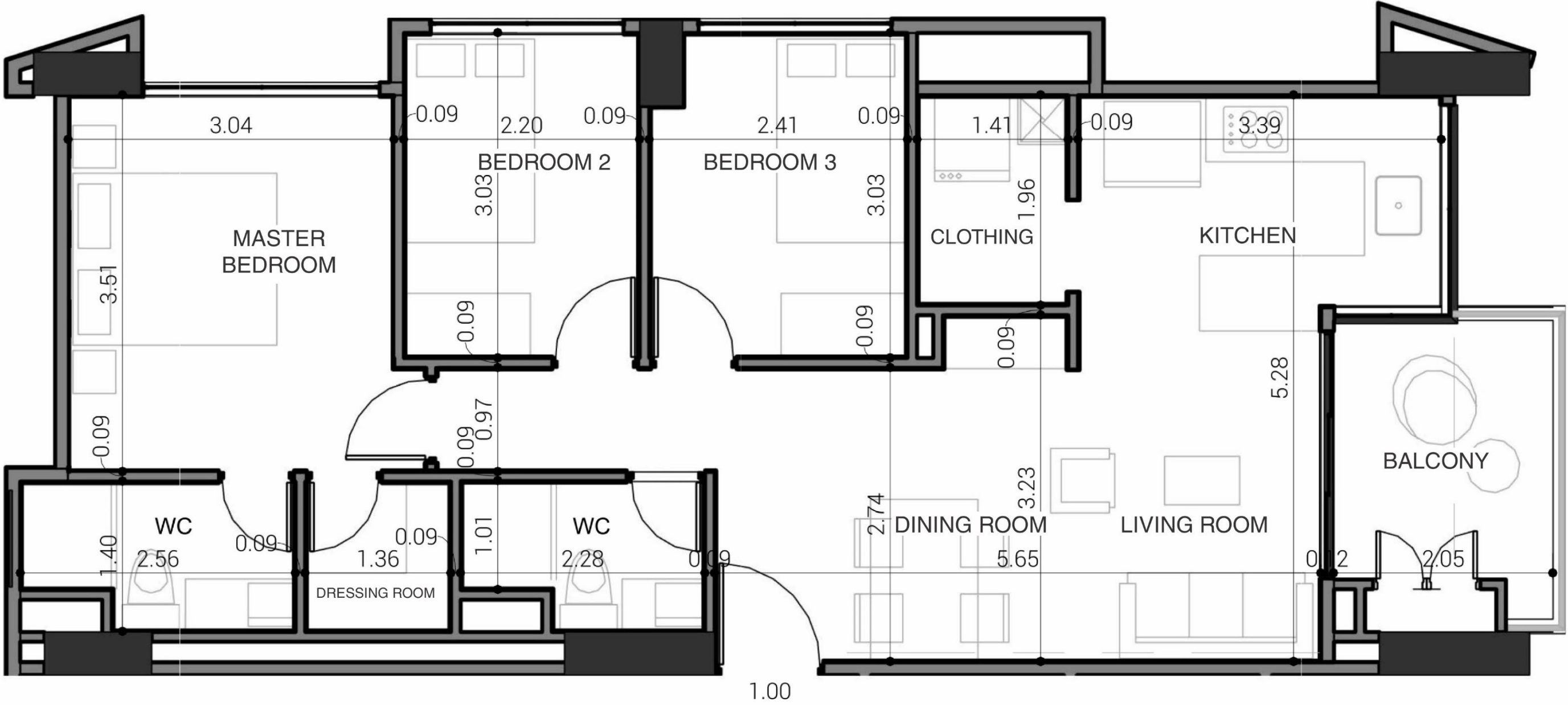


\*This image is for illustrative purposes only and may be subject to change. It also contains aesthetic elements that reflect the artist's interpretation and are not binding for the development companies.

Quoted price is subject to change without prior notice and does not constitute a business offer. The current property prices must be confirmed with the project's sales office. This quotation, along with the documents and contracts required for fiduciary linkage related to the proposed owner(s) of the Suiza Apartments project, must be approved by the management of the development companies.



# 840 sq. ft. Apartments

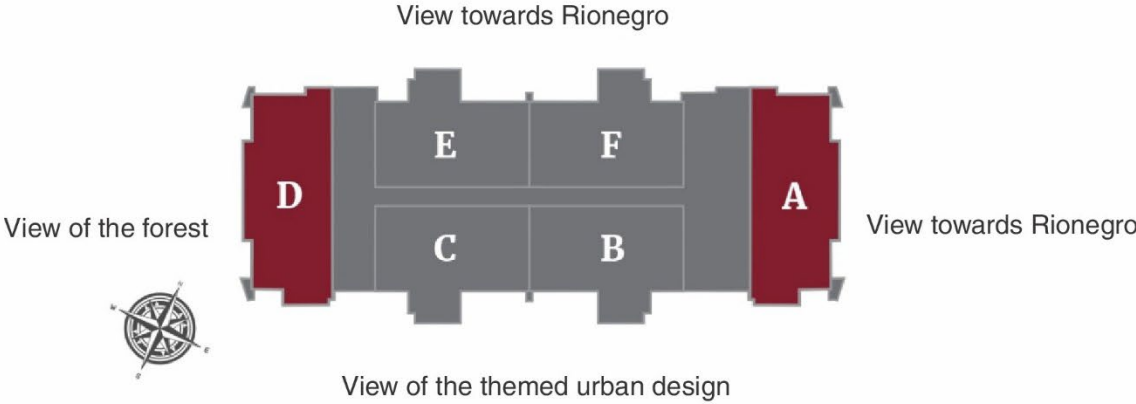


**BUILT AREA:** 78.4 m<sup>2</sup> (approx. 844 sq. ft.)  
**PRIVATE AREA:** 70.5 m<sup>2</sup> (approx. 759 sq. ft.)

**Tower 1**  
3 bedrooms  
Includes utility shafts, columns, and perimeter walls\*

The area measurements of each space are taken between the walls that define them and do not include furniture.

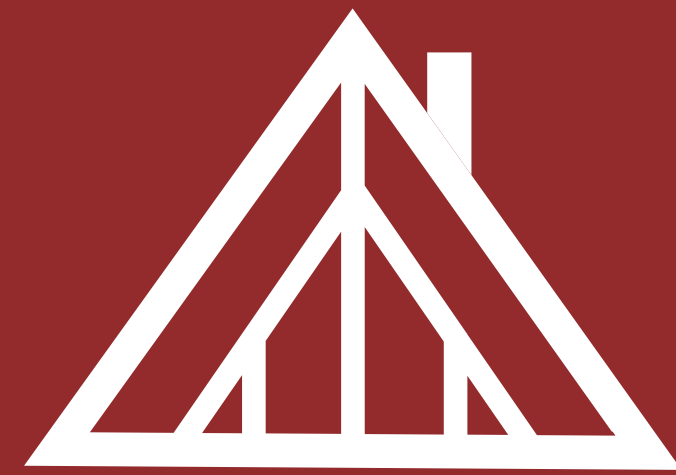
The full finishes package will have an additional cost, which will be provided at the sales office.



\*This image is for illustrative purposes only and may be subject to change. It also contains aesthetic elements that reflect the artist's interpretation and are not binding for the development companies.

Quoted price is subject to change without prior notice and does not constitute a business offer. The current property prices must be confirmed with the project's sales office. This quotation, along with the documents and contracts required for fiduciary linkage related to the proposed owner(s) of the Suiza Apartments project, must be approved by the management of the development companies.





# Suiza

APARTAMENTOS

*A new project in Rionegro*

TO LOVE, CARE FOR, AND ENJOY.

Contact us:

☎ +57 310 699 80 39

📷 @suiza\_apartamentos

WITH THE SUPPORT OF:



Londoño  
Gómez



**PULSO**  
PROYECTOS TEMÁTICOS